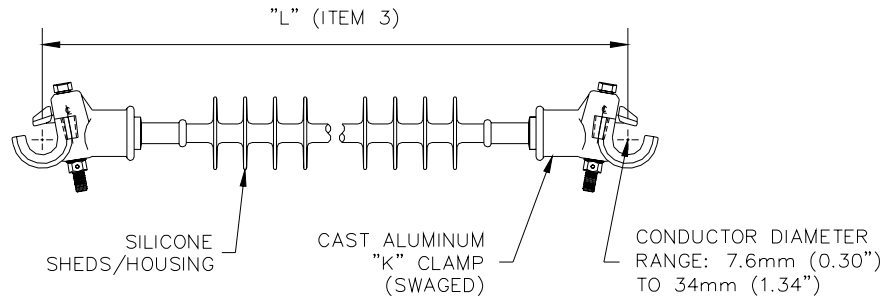
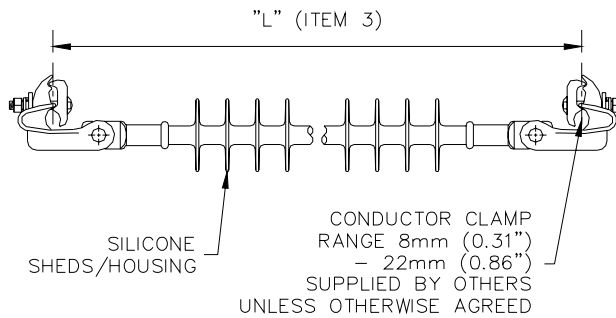


# DISTRIBUTION INTERPHASE SPACER – 15kV TO 69kV

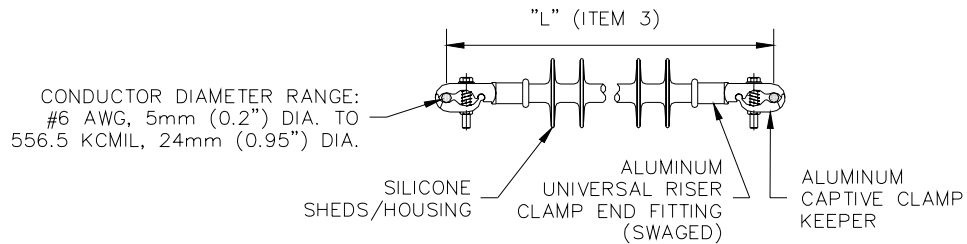
m



**DESIGN 'A'**  
**"K" CLAMPS**



**DESIGN 'B'**  
**SUSPENSION CLAMPS**



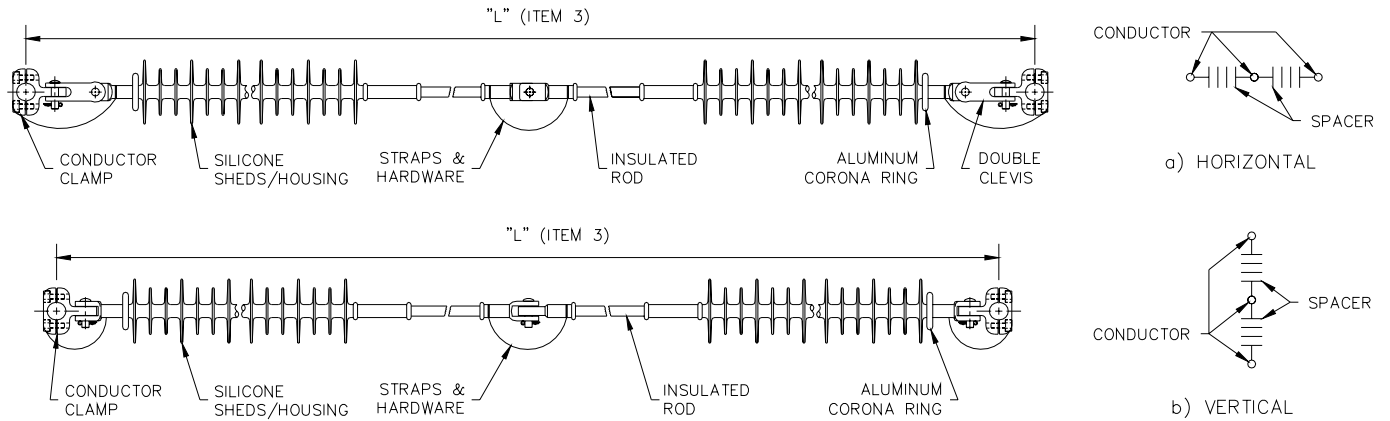
**DESIGN 'C'**  
**UNIVERSAL CLAMPS**

ITEM	SPECIFICATION	DATA
1	OPERATING VOLTAGE (PHASE – PHASE)	kV
2	MOUNTING ARRANGEMENT: 1) HORIZONTAL 2) VERTICAL)	
3	LENGTH "L" (CONDUCTOR – CONDUCTOR)	mm
4	CONDUCTOR DIAMETER (INCLUDING ARMOUR ROD IF APPLICABLE)	mm
5	CONDUCTOR CLAMP: 1) SUSPENSION 2) "K" CLAMP 3) UNIVERSAL)	
6	POLLUTION LEVEL (IEC 815)	

**NOTE:**

- OTHER DESIGNS ARE AVAILABLE, PLEASE CONTACT K-LINE FOR DETAILS.

## TRANSMISSION INTERPHASE SPACER – 69kV TO 230kV



ITEM	SPECIFICATION	DATA
1	OPERATING VOLTAGE (PHASE – PHASE)	kV
2	MOUNTING ARRANGEMENT: 1) HORIZONTAL 2) VERTICAL)	
3	LENGTH "L" (CONDUCTOR – CONDUCTOR)	mm
4	CONDUCTOR DIAMETER (INCLUDING ARMOUR ROD IF APPLICABLE)	mm
5	CONDUCTOR CLAMP: 1) SUSPENSION 2) "K" CLAMP 3) UNIVERSAL)	
6	POLLUTION LEVEL (IEC 815)	

SUSPENSION CONDUCTOR CLAMP TABLE	
PART No.	CONDUCTOR RANGE
KLOP91-0	19.05mm (0.75") – 25.4mm (1.00")
KLOP91-1	25.65mm (1.01") – 30.48mm (1.20")
KLOP91-2	30.73mm (1.21") – 35.56mm (1.40")
KLOP91-3	35.81mm (1.41") – 40.64mm (1.60")
KLOP91-4	40.89mm (1.61") – 45.72mm (1.80")

### NOTE:

- OTHER DESIGNS ARE AVAILABLE, PLEASE CONTACT K-LINE FOR DETAILS.



### K-LINE INSULATORS LIMITED

50 Passmore Avenue, Toronto, Ontario, Canada M1V 4T1

• Tel.: (416) 292-2008 • Fax: (416) 292-2094 • E-Mail: [insulators@k-line.net](mailto:insulators@k-line.net) • Web Page: [www.k-line.net](http://www.k-line.net)

March 2003