

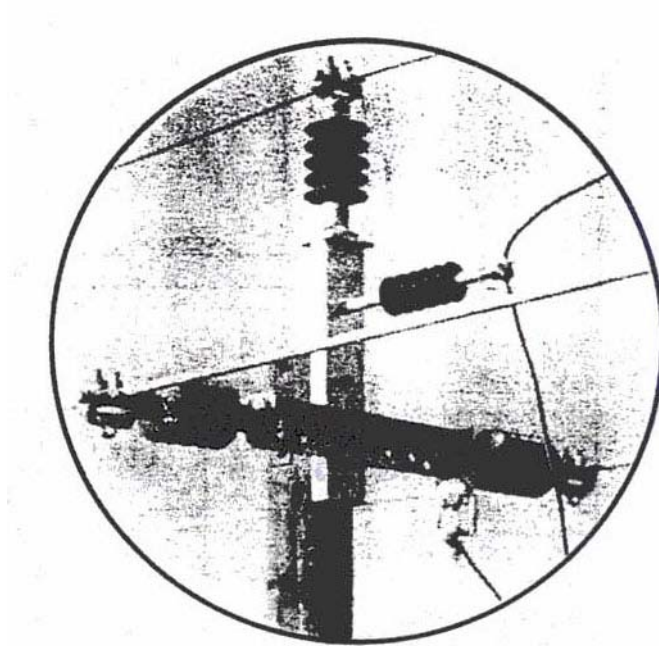


K-LINE INSULATORS LIMITED

TORONTO, ONTARIO, CANADA

Catalogue MB-PT

Single Circuit Pole Top Framing Assembly

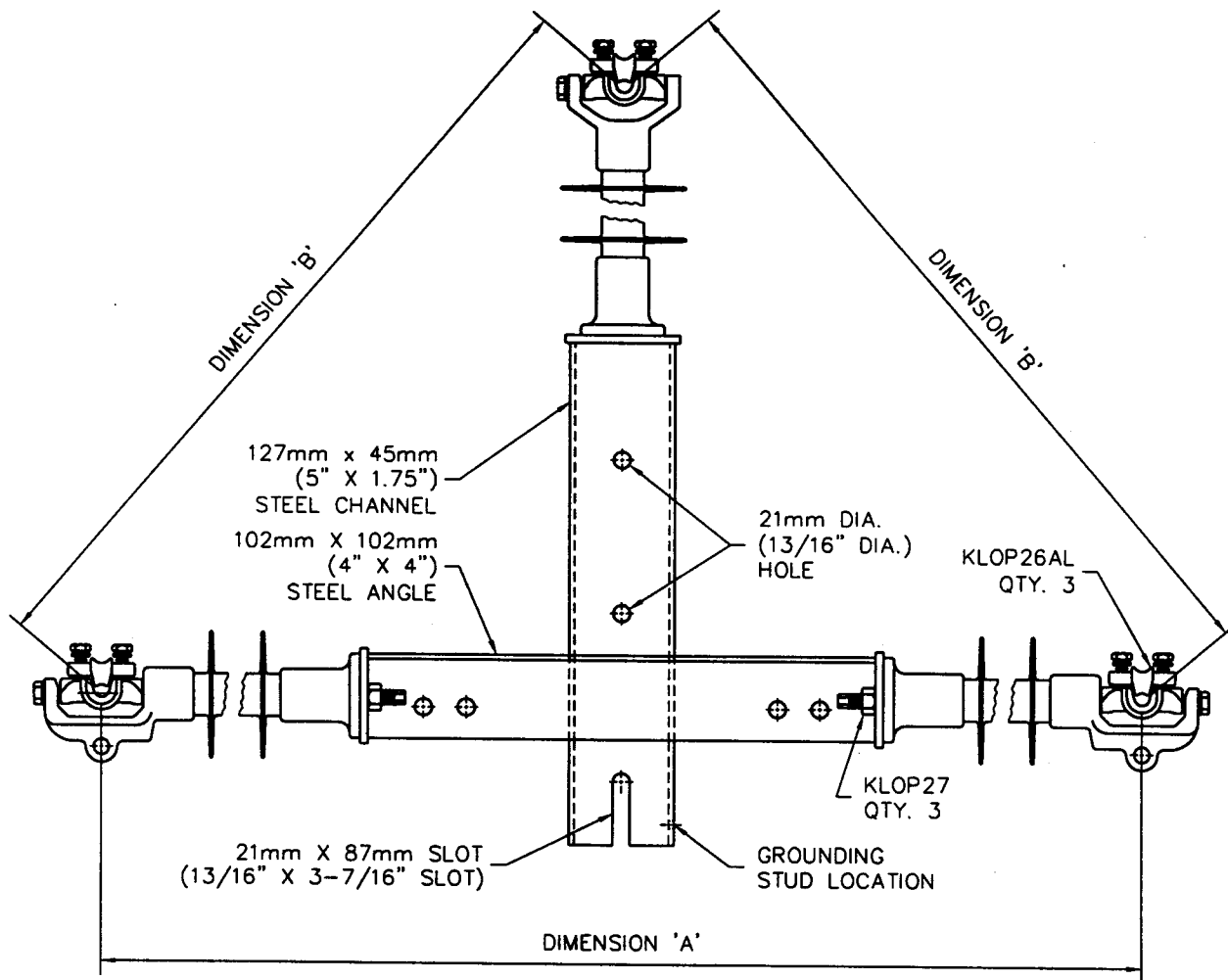


Single Circuit

Pole Top Framing Assembly

The ultimate in labour saving and convenience is provided by K-Line's single circuit pole-top framing assembly (35 kV shown). The assembly comes complete in kit form with mounting bracket, polymer line post insulators, trunnion clamps and insulator mounting studs. Install with two bolts and the structure is ready to sag.

The hot dip galvanized steel bracket comes with predrilled holes for mounting of riser support insulators and a grounding lug. The insulators are of silicone, the ultimate in polymer line post insulators for maintenance-free operation.



TECHNICAL DATA

SPECIFICATIONS	UNIT	CATALOGUE NUMBER			
		KL15SCFK	KL28SCFK	KL35SCFK	KL46SCFK
VOLTAGE RATING	kV	15	28	35	46
POSITIVE IMPULSE CRITICAL FLASHOVER	kV	130	160	195	240
LEAKAGE DISTANCE	mm (in)	275 (10.8)	425 (16.7)	660 (26.0)	865 (34.0)
LOW FREQUENCY WET FLASHOVER	kV	40	65	85	115
DIMENSION 'A'	mm (in)	1168 (46)	1270 (50)	1422 (56)	1575 (62)
DIMENSION 'B'	mm (in)	915 (36)	980 (40)	1087 (44)	1197 (48)
VERTICAL LOAD RATING	kN (lbs.)	5.3 (1200)	5.3 (1200)	5.3 (1200)	5.3 (1200)
LONGITUDINAL LOAD RATING	kN (lbs.)	5.3 (1200)	5.3 (1200)	5.3 (1200)	5.3 (1200)
TRANSVERSE LOAD RATING	kN (lbs.)	13.4 (3000)	13.4 (3000)	13.4 (3000)	13.4 (3000)
TENSION LOAD RATING	kN (lbs.)	13.4 (3000)	13.4 (3000)	13.4 (3000)	13.4 (3000)
APPROX. WEIGHT	kg (lbs.)	27 (59)	28 (61)	30 (66)	32 (70)

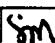


K-LINE INSULATORS LIMITED

50 PASSMORE AVE., TORONTO, ONTARIO,
CANADA, M1V 4T1

TEL.: (416) 292-2008

FAX: (416) 292-2094

DWG. No.	C	MAR. 24/03	128	
CAT-SCFK	REV.	DATE	ECO	