

END FITTINGS

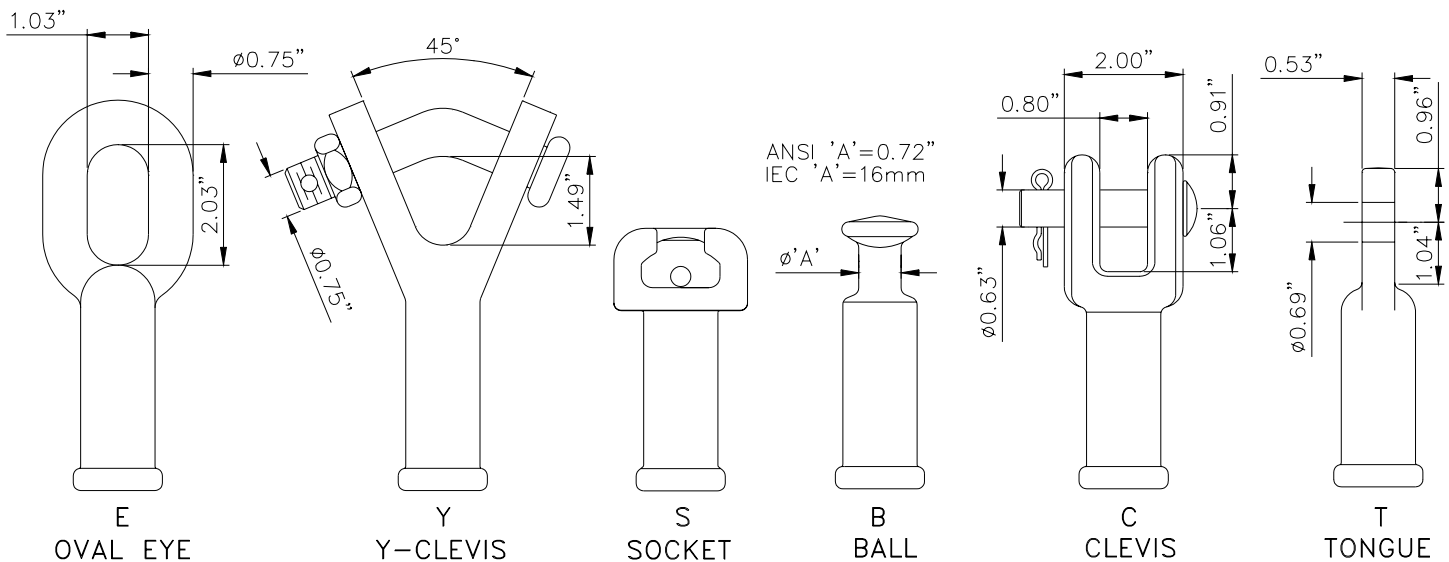
The end fittings on the transmission insulator are made of high strength, cast (forged) steel. The insulators have a specified mechanical load (SML) rating of 120 kN (27,000 lbs.). Also, all insulators are proof tested to 60 kN (13,500 lbs.) in tension.

The end fittings are radially swaged on to the core rod to provide the mechanical performance and reduce the stress concentration. Our proprietary design insures a watertight seal between the rubber and end fitting. This special silicone rubber to metal fittings sealing process prevents moisture ingress to the core fiberglass rod.

Hot-dip galvanizing to CSA G164 and ASTM A153 Standard provides corrosion protection of the end fittings. The cotter key is made from stainless steel.

The standard end fittings that are available are listed and detailed in the below. For other special end fittings contact K-Line Insulator Limited.

END FITTING COMBINATIONS



SECTION LENGTHS

The section lengths (L) published on the Technical Data sheet are for the ball and socket end fittings. For alternate combinations of end fittings, use the following table to establish section lengths.

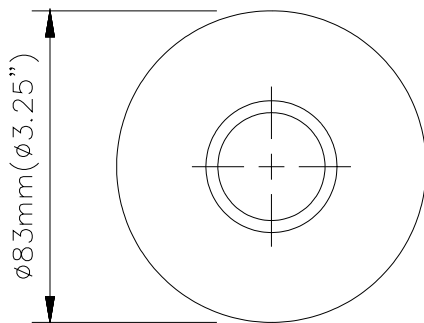
SECTION LENGTH ADJUSTMENT

End Fitting	End Fitting Designation	Section Length
ANSI Ball / Socket	BS	L (see Technical Data sheet)
ANSI Ball / Y-clevis	BY	L + 36 mm (1.4")
ANSI Ball / oval Eye	BE	L + 41 mm (1.6")
oval Eye / oval Eye	EE	L + 84 mm (3.3")
Clevis / Tongue	CT	L + 21 mm (0.8")

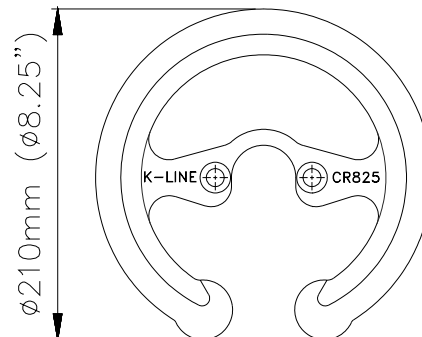
CORONA RINGS

High voltage lines above 88 kV phase-to-phase can generate unnecessary noise (RI and TVI) and corona due to the high electrical stress concentration. To minimize these effects gradient or corona rings are installed on the end fitting of the insulator. Guidelines used in the application of these rings are noted below.

Insulators that are used on system voltages above 88 kV and below 150 kV are supplied with a built-in gradient ring. Insulators that are used on system voltages from 150 kV and above are supplied with a separate corona ring for assembly in the field before installation. The ring is designed for installation in only one orientation and location to avoid miss application. These rings are made from aluminum that make them light weight and corrosion resistant.



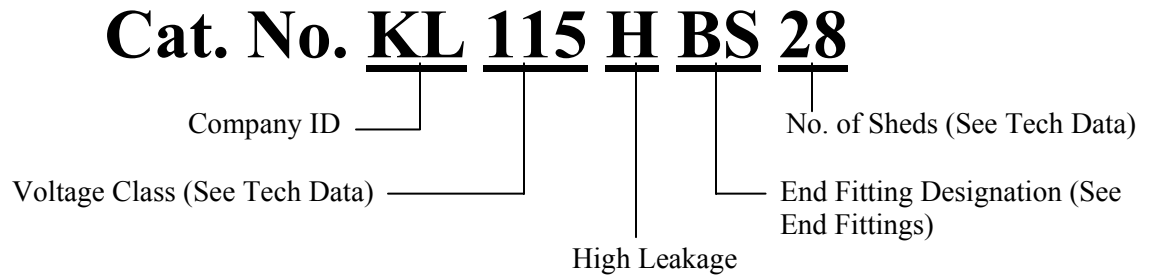
Gradient (Built-in) Ring
88 kV to below 150 kV



Corona Ring
150 kV to 230 kV

ORDERING INFORMATION

For ordering the catalogue number of the specific insulator is formulated as shown below.



K-LINE INSULATORS LIMITED

50 Passmore Avenue, Toronto, Ontario, Canada M1V 4T1

• Tel.: (416) 292-2008 • Fax: (416) 292-2094 • E-Mail: insulators@k-line.net • Web Page: www.k-line.net