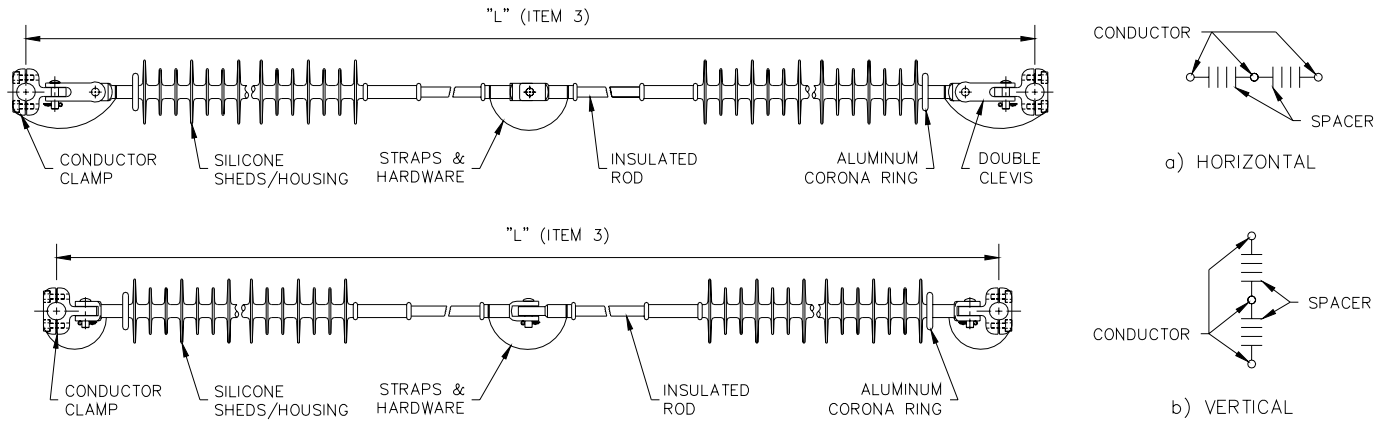


TRANSMISSION INTERPHASE SPACER – 69kV TO 230kV



| ITEM | SPECIFICATION | DATA |
|------|---|------|
| 1 | OPERATING VOLTAGE (PHASE – PHASE) | kV |
| 2 | MOUNTING ARRANGEMENT: 1) HORIZONTAL 2) VERTICAL) | |
| 3 | LENGTH "L" (CONDUCTOR – CONDUCTOR) | mm |
| 4 | CONDUCTOR DIAMETER (INCLUDING ARMOUR ROD IF APPLICABLE) | mm |
| 5 | CONDUCTOR CLAMP: 1) SUSPENSION 2) "K" CLAMP 3) UNIVERSAL) | |
| 6 | POLLUTION LEVEL (IEC 815) | |

| SUSPENSION CONDUCTOR CLAMP TABLE | |
|----------------------------------|-----------------------------------|
| PART No. | CONDUCTOR RANGE |
| KLOP91-0 | 19.05mm (0.75") – 25.4mm (1.00") |
| KLOP91-1 | 25.65mm (1.01") – 30.48mm (1.20") |
| KLOP91-2 | 30.73mm (1.21") – 35.56mm (1.40") |
| KLOP91-3 | 35.81mm (1.41") – 40.64mm (1.60") |
| KLOP91-4 | 40.89mm (1.61") – 45.72mm (1.80") |

NOTE:

- OTHER DESIGNS ARE AVAILABLE, PLEASE CONTACT K-LINE FOR DETAILS.



K-LINE INSULATORS LIMITED

50 Passmore Avenue, Toronto, Ontario, Canada M1V 4T1

• Tel.: (416) 292-2008 • Fax: (416) 292-2094 • E-Mail: insulators@k-line.net • Web Page: www.k-line.net

March 2003